

PHYSICIAN ASSISTANT EDUCATION ASSOCIATION

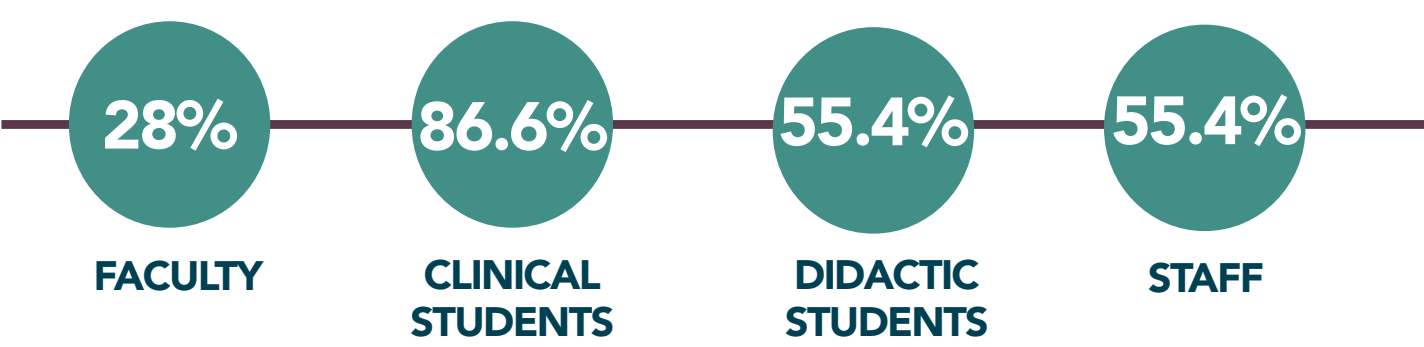
COVID-19

RAPID RESPONSE REPORTS

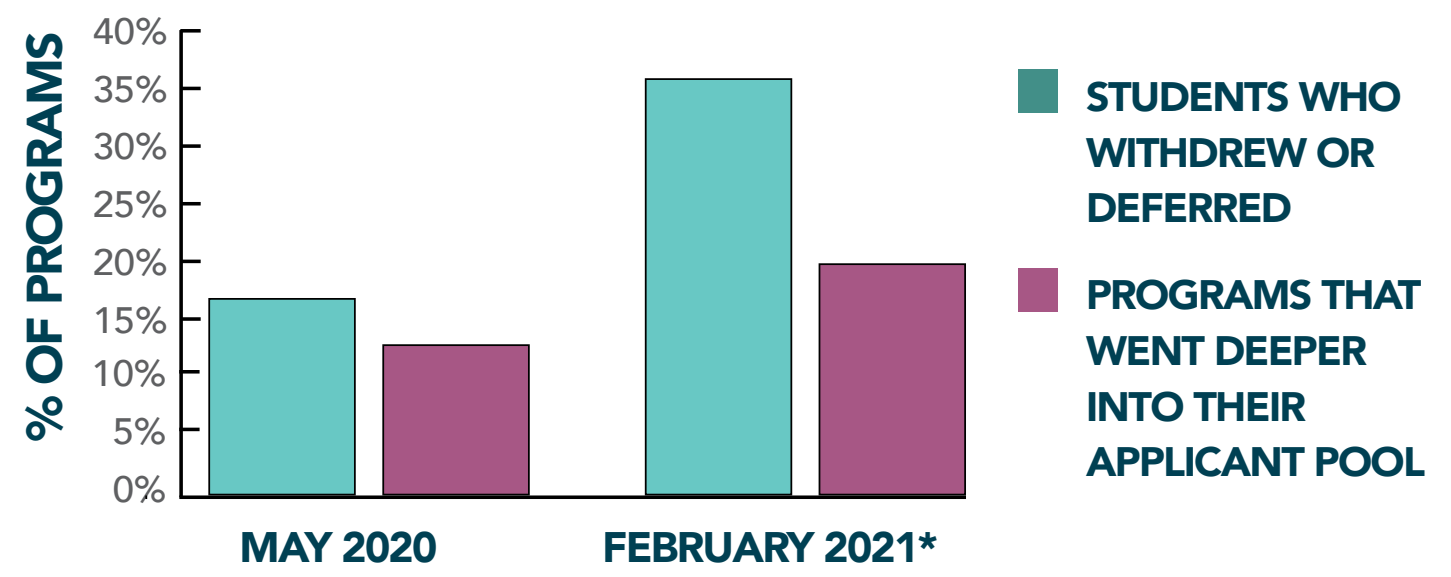


PROGRAM IMPACTS

PERCENT OF PROGRAMS REPORTING SUSPECTED OR CONFIRMED CASES OF COVID-19 IN SPRING 2021



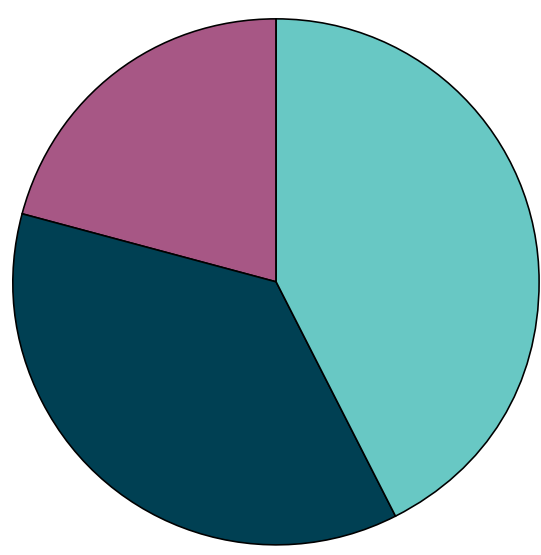
COVID-19 ADMISSIONS IMPACTS



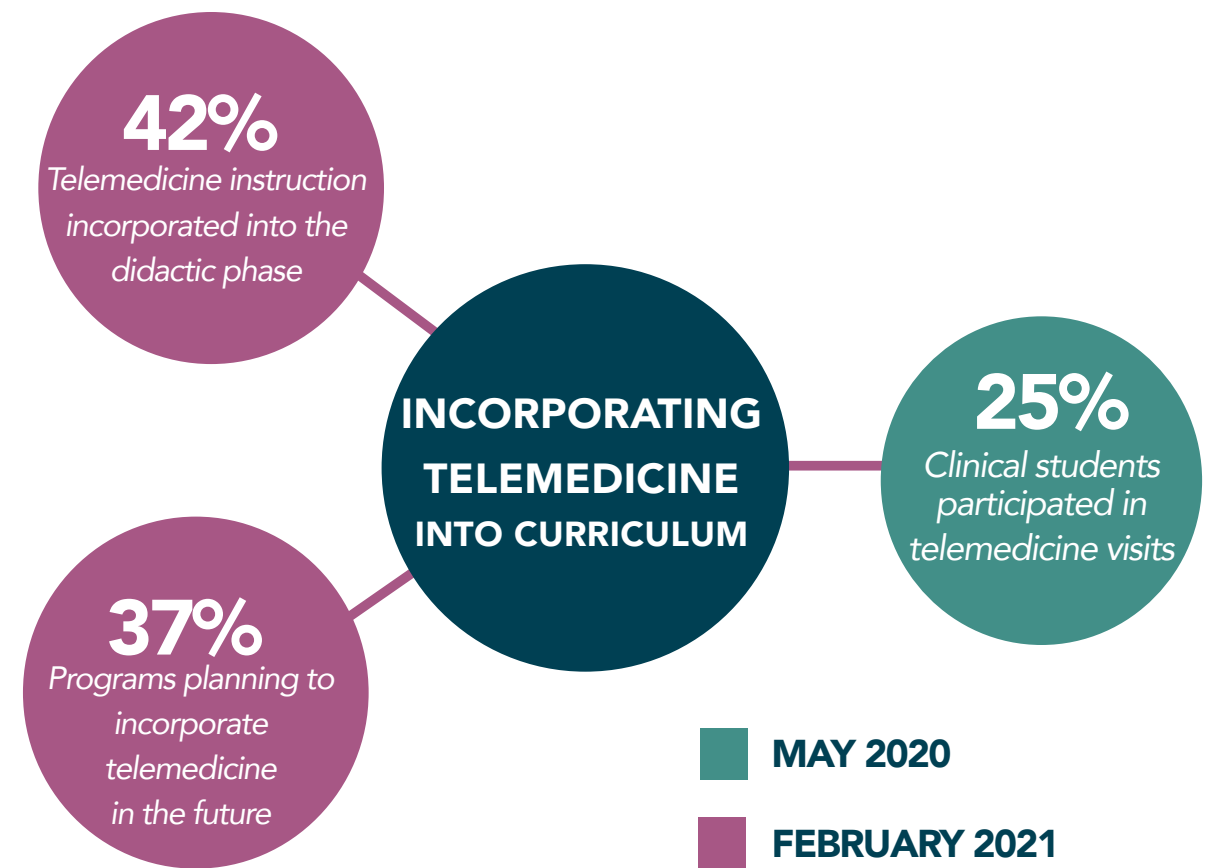
*16% OF PROGRAMS INTERVIEWED MORE APPLICANTS

CHANGES TO ACADEMIC INSTRUCTION

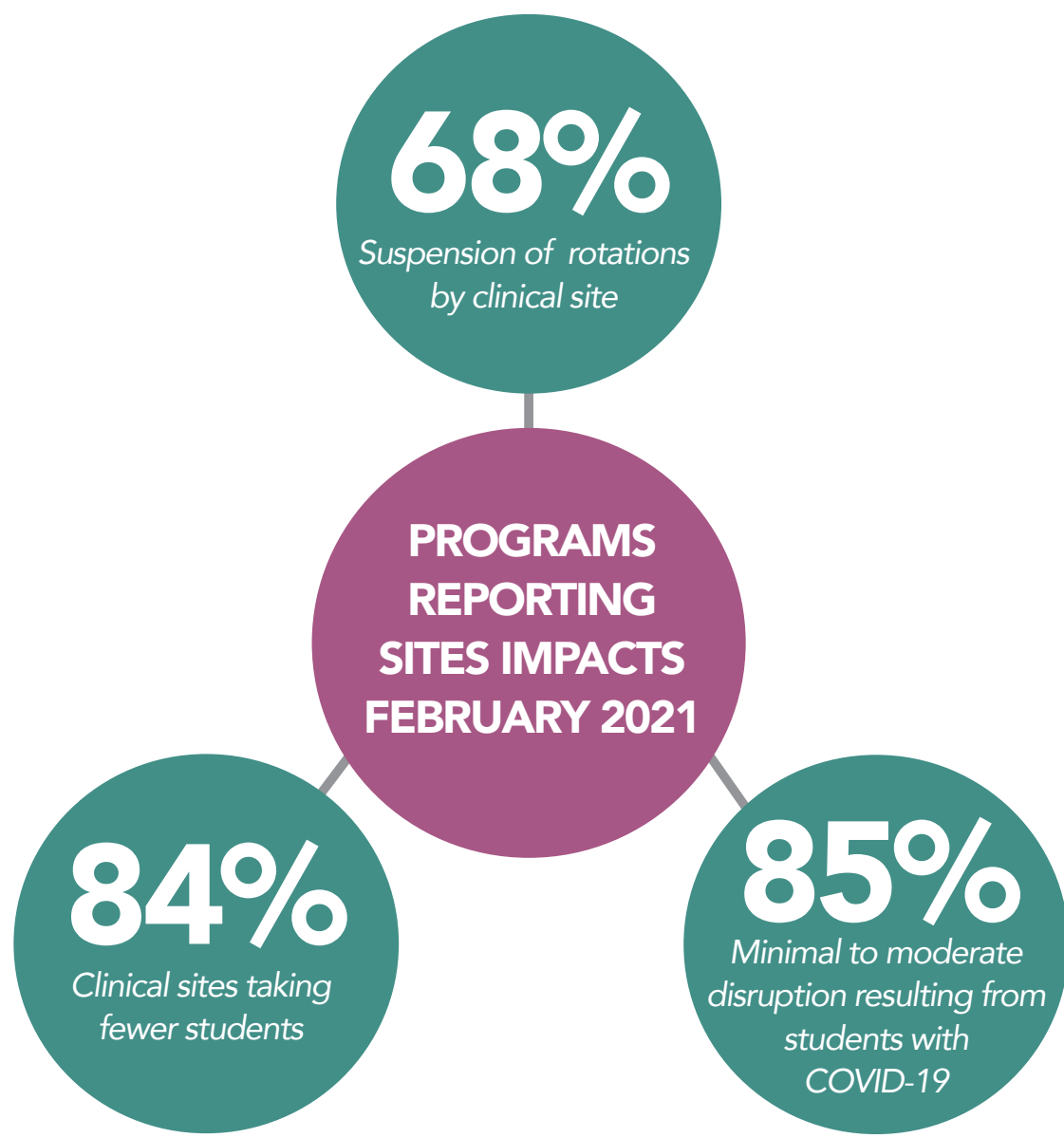
CHANGES TO CURRICULUM CALENDAR: FEBRUARY 2021



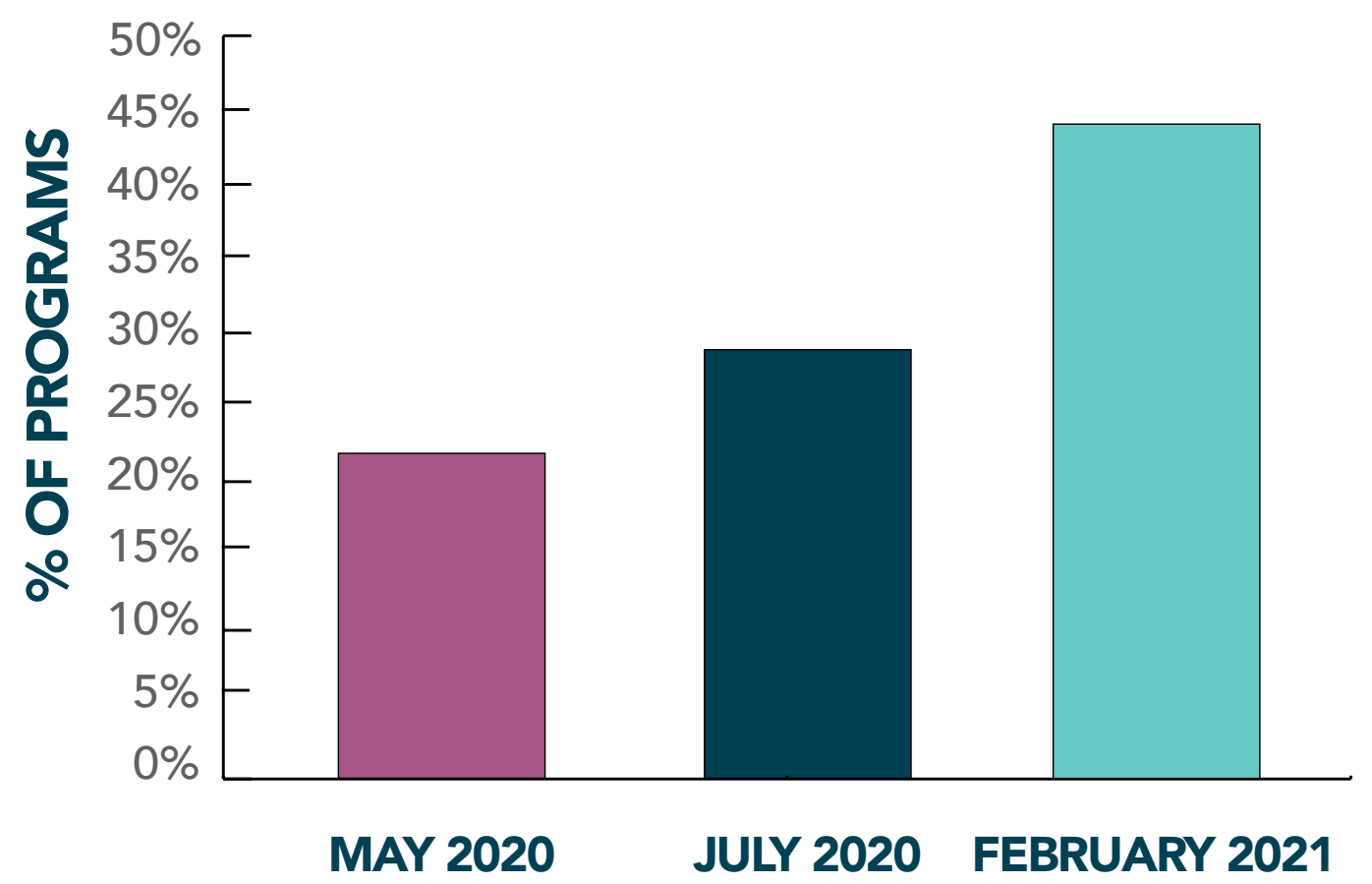
41% OF PROGRAMS REPORTED UNPLANNED SCHEDULED CHANGES TO DIDACTIC INSTRUCTION
 35% OF PROGRAMS REPORTED CLASS CANCELLATIONS BY CLINICAL PRACTICING INSTRUCTORS
 20% OF PROGRAMS REPORTED NO CHANGES TO THE ACADEMIC CALENDAR



IMPACT ON CLINICAL EDUCATION

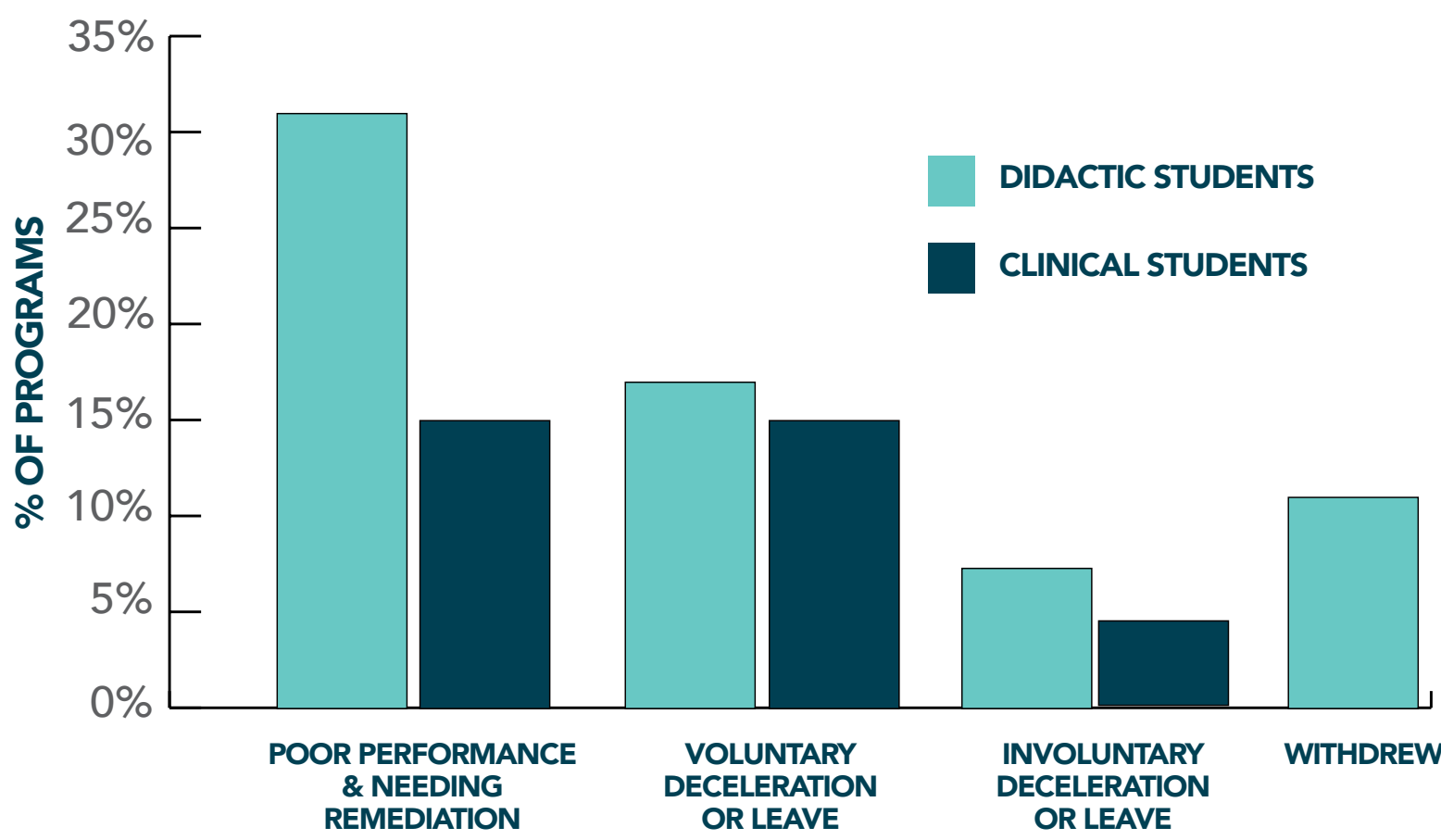


DELAYED TRANSITION TO CLINICAL PHASE



WELLNESS & SAFETY

STUDENT SUCCESS DURING THE PANDEMIC: FEBRUARY 2021



MEASURES TO KEEP CLINICAL STUDENTS SAFE: FEBRUARY 2021

- 89%: PPE PROVIDED BY THE CLINICAL SITE
- 83%: PPE PROVIDED BY THE PROGRAM
- 24%: PPE PROVIDED BY STUDENT
- 77%: OFFERED COVID-19 VACCINE
- 74%: DAILY COVID-19 STUDENT SCREENING PROTOCOLS
- 69%: RESTRICTED CONTACT WITH PATIENTS KNOWN OR SUSPECTED TO HAVE COVID-19 INFECTION

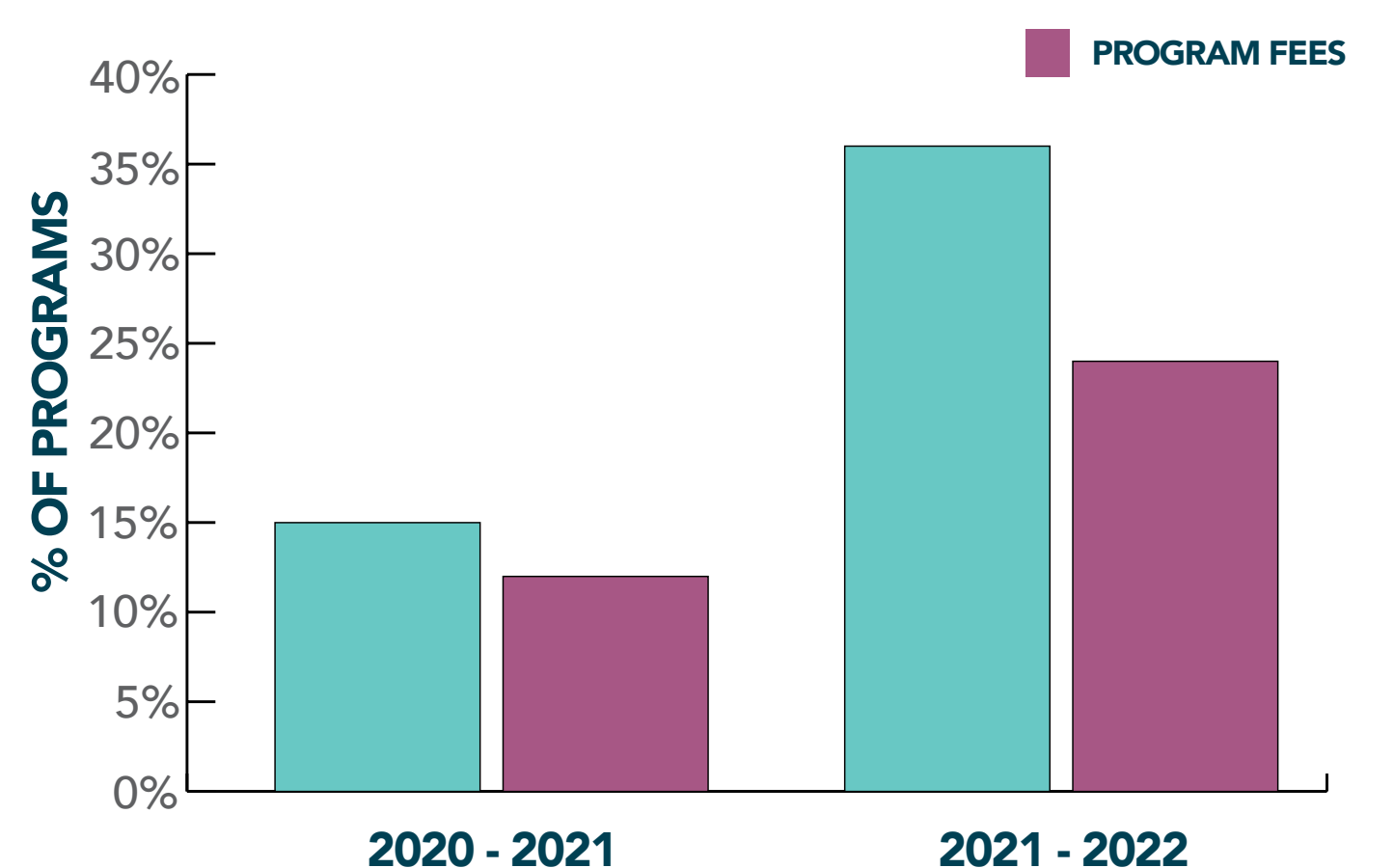


FINANCIAL IMPACTS

FEBRUARY 2021

- 35% FACULTY HIRING SUSPENDED
- 45% OF PROGRAMS FACULTY PROFESSIONAL DEVELOPMENT FUNDS CUT
- 73% OF PROGRAMS REPORTED NEW EXPENDITURES (MEDIAN \$15,000)
- 27% OF PROGRAMS EXPECT BUDGETS TO BE CUT
- 21.5% OF PROGRAMS REPORT REALLOCATION TO DIFFERENT LINE ITEMS

TUITION FEE INCREASES KNOWN & PROJECTED



2021 PAEA RESEARCH MISSION ADVANCEMENT COMMITTEE MEMBERS

Mary Warner DBH, PA-C, Chair
University of Bridgeport PA Program

Ryan White, MPH, PA-C
Rutgers School of Health Professions

Keren Wick, PhD
University of Washington PA Program

Elana Min, PhD, PA-C
Northwestern PA Program

Alexandria Garino, PhD, PA-C
Yale School of Medicine PA Program

Virginia Valentin, DrPH, PA-C
University of Utah PA Program

Nina Multak, PhD, MPAS, PA-C
University of Florida School of PA Studies